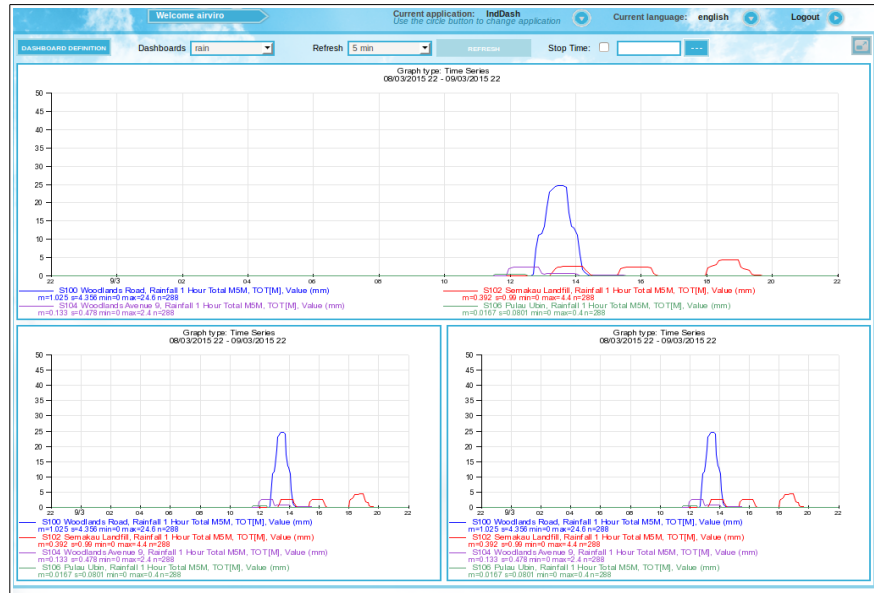


Airviro User's Reference



Working with Indico Dashboard Visualizing graphs and tables in an easy way

CONTENT

11.1 INTRODUCTION.....	5
11.2 GETTING STARTED.....	5
11.3. MAIN WINDOW.....	6
11.4 DASHBOARD DEFINITION.....	7
11.5 EXPORT A GRAPH / TABLE.....	8

11.1 Introduction

The Indico Dashboard Module is an Airviro user interface, used to display several graphs and tables in the same web page, normally in real time. The Dashboard uses definitions of graphs and tables that has been stored as Macros in Indico Presentation. Using the Macros and the Dashboard definition page new Dashboards can be defined. The definition of Dashboards are stored in the Airviro server in a similar way to Indico Macros.

Unlike other Airviro modules, the Dashboards Module doesn't needs Java Runtime Environment that is JAVA JRE (run time plug-in) to be installed and enabled in the web browser.

This Airviro module can be executed and Accessed using a PC or other device running Internet Explorer 9 or later, Firefox or other internet browsers based on Mozilla.

After logging in to Airviro a domain is chosen and there after the Indico Dashboard should be chosen.

11.2 Getting started

Once Airviro has been properly installed on the server, you can begin using it by typing the correct URL in your web browser over Intranet/Internet.

After logging in with user-ID and password, the user select a domains and choose **Indico Dashboard** as the module.

In **Current application** you can see the actually selected Module. Using the arrow button another module can be chosen. (*Figure 11.1*)

Click in the arrow button **Current language** to select the language to work with. In version 4.00 this function is not available yet.

With **Logout** you can close the Airviro windows and return to the login window.



Figure 11.1 Main menu.

11.3. Main window

When the Dashboard Module has been selected, the user gets the following options available in the Main Dashboard window:

- Dashboard definition: Used to define new dashboards or change old ones.
- Dashboard: Contains a list of available dashboards and is used to select the current dashboard.
- Refresh: Use this button to redraw the dashboard with the latest data. It is also possible to specify a refresh interval, for example, 1 minute, 5 minute or 1 hour. The dashboard then refreshes automatically. (See *Figure 11.2*)
- Stop time: Used to display historical data. By default the stop time of the data that the dashboard shows is now. To show historical data another stop date/time than now must be specified. Either the stop time can be typed into the text box or pressing the ... button opens a calendar that can be used to enter the date. The length of the time periods shown in the graph/tables are stored in the macros that defines the graphs/tables.

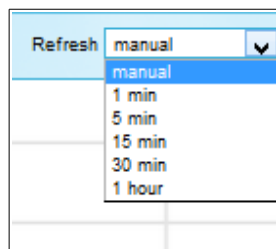



Figure 11.2 Refresh Intervals.

-  This button is used to maximize the dashboard so that it uses the whole web

browser.

Clicking on each graph/table, they will be maximized and displayed in a enlarged window.



Figure 11.3. Dashboard Graphs / Tables.

11.4 Dashboard definition

In the Dashboard definition, the user can add, edit and delete dashboards. Use **BACK**, to return the main window.

When creating a new dashboard and after entering the dashboard name, the layout of the dashboard should be defined.

First, define the size of the dashboard in grid squares (X,Y) The maximum size is 4 cells horizontally (y) and 4 vertically (x). Then, using the combo box in each grid cell, divide the grid into sections. The cells in a sections has the same number. Each section will contain a graph or table. A section must have a rectangular shape. See Figure 11.4. Dashboard Definition.

The **CHECK LAYOUT** button is used to preview the layout definition. For each section of the dashboard a macro, must be associated.

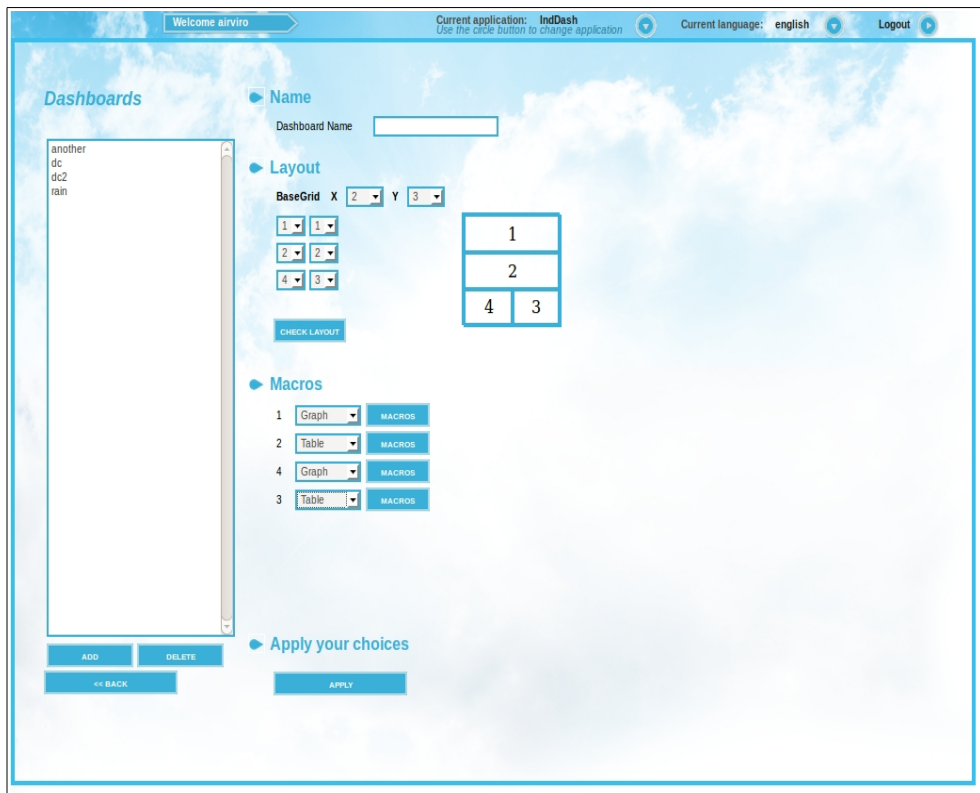


Figure 11.4 Dashboard Definition.

Select a macro for each section using **MACROS**. Select if the section should contain a graph or table using the combo boxes. The macros are defined in the Indico Presentation and are stored in user's home directory.

Then, click on **APPLY** to save the dashboard definition.

11.5 Export a graph / table

By positioning the mouse pointer in the upper left corner of the graphs/tables, the user can export the data contained in the graph/tables to different output options: For graphs XLS, CSV, PNG and PDF formats are available. For tables only XLS and SCV (see *Figure 11.3*).